



Advancing developmental promotion, early detection, and linkage to services



What is Help Me Grow?

The mission of Help Me Grow South Carolina is to promote the healthy development of all children prenatal to age five.

- Operational in 12 counties:
 - Lowcountry: Berkeley, Beaufort, Charleston, Colleton, Dorchester, Jasper
 - Upstate: Anderson, Greenville, Laurens, Oconee, Pickens, Spartanburg
- Moving toward statewide expansion
- One of 99 systems in 28 states

Help Me Grow offers:

- Information and support for any parent who has a question or concern about their child's development or behavior
- Developmental and behavioral health screenings to help parents discover their child's strengths and areas where their child may need extra support
- Connection to community resources and services for children and families
- Collaborative community partnerships to improve the availability and quality of services for families

Families access Help Me Grow through a centralized access point that provides telephone-based care coordination by child development specialists who are trained to:

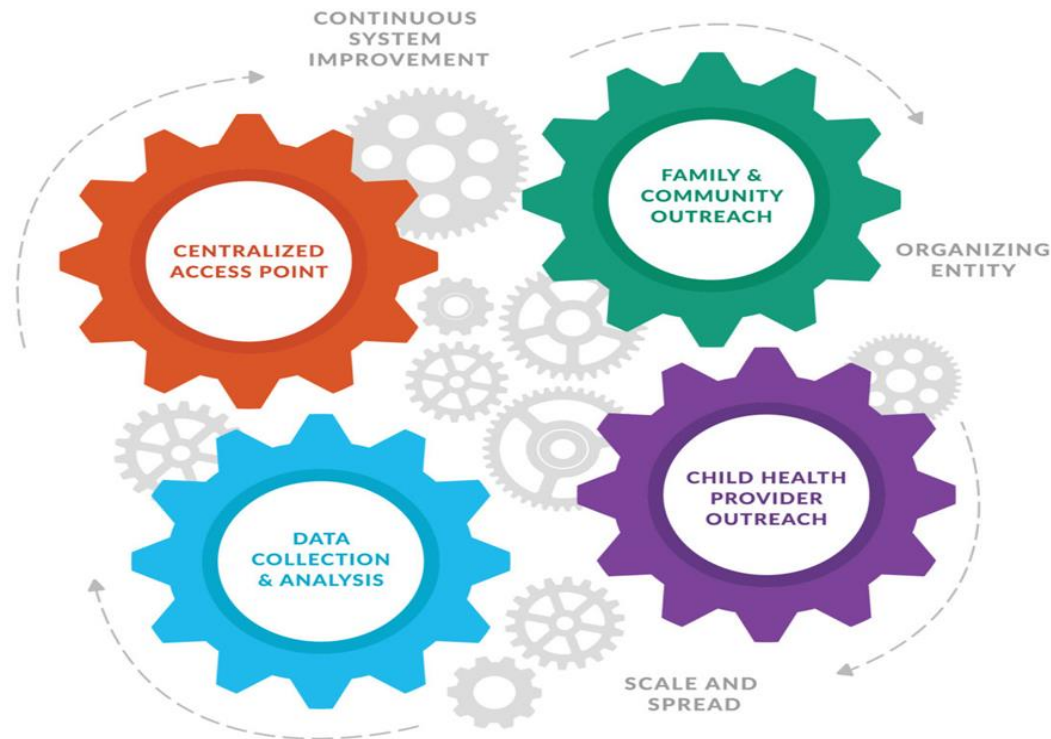
- Answer questions about developmental or behavioral concerns
- Help families understand typical developmental milestones
- Provide referrals to community-based programs and services
- Follow up with families to determine if they are connected to recommended supports and if those supports are meeting their needs

How is Help Me Grow Different?

- All services are provided over the telephone or online
- All services are provided at no cost to the family
- All services are available in English and Spanish (translation available for all other languages)
- Help Me Grow offers care coordination services
- Help Me Grow provides feedback to the Medical Home

Help Me Grow South Carolina is a system model that leverages existing community resources to help identify vulnerable children, link families to community-based services, and equip families to support their children's healthy development. The system implements four core components.

HMG Core Components



Centralized Access Point

- Serves as a single point of entry for families, child health providers, and other professionals seeking information, support, and referrals for children
- Provides seamless care coordination and follow up with families to ensure services have been received

Family and Community Outreach

- Promotes the use of Help Me Grow
- Facilitates networking among families and various child health, family health, and community-based service providers
 - engage families through participation in community meetings, forums, public events, health fairs, etc.
 - host events that help families learn about child development - ***Read Rattle & Roll***
 - establish and maintain relationships with community-based service providers to which families can be referred for help (provider information included in HMG's Centralized Online Resource Database)

Child Health Provider Outreach

- Office-based trainings that promote systematic surveillance and screening of young children for potential developmental concerns and on how to utilize Help Me Grow to assist their families
- Provides pediatricians with access to a centralized access point that can serve as a care coordination arm for busy pediatric primary care practices
- Loops the medical home into the system

Data Collection and Analysis

- Data collection to understand all aspects of the Help Me Grow system, including the identification of gaps and barriers
- Continuous quality improvement processes refine all aspects of the system

Dr. Paul Dworkin

<https://www.youtube.com/watch?v=lfupl4bARLk&feature=youtu.be>

Help Me Grow Assumptions

- Children with developmental delays are escaping detection.
 - Only 30% of children with developmental problems are identified prior to school entry.
- Even in relatively resource poor areas, there are still some services.
 - Some resources exist, but access to them is lacking.

Help Me Grow Assumptions

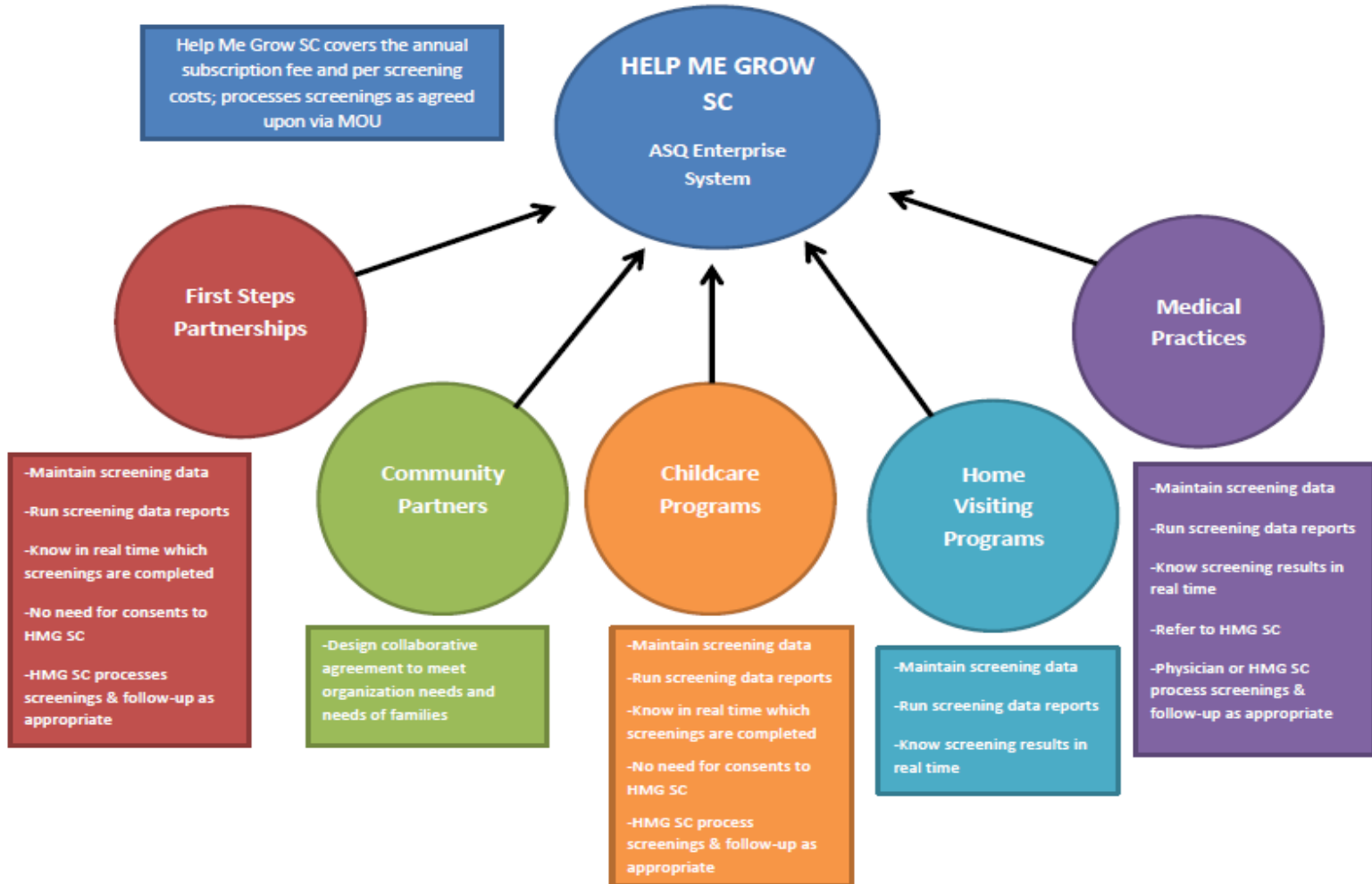
- A gap exists between the effort to identify children and their connection to services.
 - Efforts exist that focus on early identification of delays, but linkage to services lacks coordination.
- Families benefit from a Help Me Grow system.
 - A significant amount of children referred to Baby Net and/or Child Find are ineligible. Those families still need help finding resources.

The Challenge

- 12 -16% of all American children (19% in South Carolina) experience developmental or behavioral problems.
- Only 20 – 30% of children with developmental delays are identified before school entrance.
- Only 30% of families report developmental assessment by their doctors (20% in South Carolina).
- Only 50% of children who scored below the cutoff on a standardized developmental screening were referred for services, and only 11% of those children ever received an intervention.

Partnership Opportunities

Screening Partnerships



Home Visiting Programs

WARM HAND-OFF PARTNER

Limited to HMG SC Counties

Access for families to continue developmental monitoring & screening post-home visiting

Program responsibilities

Provide families with HMG messaging and materials at the time HV services are ending

HMG SC responsibilities

Share HMG SC messaging and marketing materials with home visiting program staff

Provide on-going developmental monitoring & screening to families

RESOURCE PARTNER

Statewide Opportunity with Increased Regional Resources

Access to HMG SC resources via Care Coordination calls/emails

Program responsibilities

Call or email HMG SC's Care Coordination team and describe family situation, needed services, area where services needed, health insurance plan information

HMG SC responsibilities

Maintain Centralized Online Resource Database (CORD) that contains community-based resources for children's developmental and behavioral services

SCREENING PARTNER

Statewide Opportunity

Access to online developmental screening portal to maintain ASQ-3 and ASQ:SE-2 screening results for your clients and access screening data reports

Program responsibilities

Purchase appropriate ASQ-3 & ASQ:SE-2 screening tools in English and/or Spanish
Provide program users' information (names, email addresses, phone numbers)

HMG SC responsibilities

Cover annual subscription fee (\$800 value)
Cover per screening cost (\$0.50 per screening)

MOU REQUIRED

The Well Visit Planner

The screenshot shows the Well-Visit Planner website. A large green rounded rectangle is overlaid on the page, containing the following text:

- * Families of young children age 0-6 visit the Well-Visit Planner website and complete three steps before their child's age-specific well-visit.
- * Optimized for mobile use
- * Available in English and Spanish
- * Written at 8th grade reading level

Below the callout box, the website navigation buttons are visible: "Answer a Questionnaire", "Pick Your Priorities", and "Get Your Visit Guide". A green button labeled "GET STARTED NOW!" is circled in blue. Below it is a yellow button labeled "ESPAÑOL".

At the bottom of the page, there are three informational boxes:

- Learn More About Well-Visit Planner
- Are you a Head Start or Early Head Start Program? (with logo for Division of Head Start National Centers)
- Are you a health care provider? (with logo for the Rod of Asclepius)

Footer text includes: Home | About this Web Site | Terms & Conditions | Consent Form | Educational Materials | FAQ | Help ©2017 The Child and Adolescent Health Measurement Initiative and Oregon Health and Science University. The CAHMI logo is also present with the tagline "Promoting early and lifelong health using family-centered data and tools".

Step 1



Answer a Questionnaire about your child and family. The questionnaire has about 40 questions and takes about 10 minutes to complete.

Step 2



Pick Your Priorities for what you want to talk or get information about at your child's well-visit. Avg. 3 picked. *Based on Bright Futures Guidelines*

Step 3



Get Your Visit Guide that you and your child's health care provider will use to tailor the visit to your child and family needs.

Well Visit Planner

Specific Questions about Your Child	Your Growing and Developing	Priorities
<p>Step 1: Answer a Questionnaire</p> <p>The next questions are general health questions about your child.</p> <p>Has your child been on any new medications since the last visit? <input type="radio"/> Yes <input type="radio"/> No</p> <p>List: You must select "Yes" to enter text</p> <p>Do you have concerns about how your child hears? <input type="radio"/> Yes <input type="radio"/> No</p> <p>Do you have concerns about how your child speaks? <input type="radio"/> Yes <input type="radio"/> No</p> <p>Do your child's eyes appear unusual or seem to cross, drift or be lazy? <input type="radio"/> Yes <input type="radio"/> No</p> <p>Do you have any concerns with your child's bowel movements or urination? <input type="radio"/> Yes <input type="radio"/> No</p> <p>Do you give your child any vitamins or herbal supplements? <input type="radio"/> Yes <input type="radio"/> No</p> <p>Does your child live with both parents in the same home? <input type="radio"/> Yes <input type="radio"/> No</p> <p>Do you have a dentist for your child? <input type="radio"/> Yes <input type="radio"/> No</p> <p>Is child toilet trained during the daytime for both bowel and bladder? <input type="radio"/> Yes <input type="radio"/> No</p> <p><input type="button" value="BACK"/> <input type="button" value="NEXT"/></p>	<p>Step 1: Answer a Questionnaire</p> <p>Please indicate whether your child is able to do the following: does my health care provider ask about this?</p> <p>Does your child have imaginary friends? <input type="radio"/> Yes <input type="radio"/> No</p> <p>Has your child ever asked you to pretend play at home? <input type="radio"/> Yes <input type="radio"/> No</p> <p>Can your child describe himself/herself? <input type="radio"/> Yes <input type="radio"/> No</p> <p>Does your child use different words to describe frustrated, or tired? <input type="radio"/> Yes <input type="radio"/> No</p> <p>Does your child like to sing, dance, and act? <input type="radio"/> Yes <input type="radio"/> No</p> <p>Can your child sing his or her favorite song or rhyme? <input type="radio"/> Yes <input type="radio"/> No</p> <p>Can your child name 4 colors? <input type="radio"/> Yes <input type="radio"/> No</p> <p>Can your child draw a picture that you recognize?</p>	<p>Step 2: Pick Your Priorities</p> <p>Check <u>up to 5 topics</u> you want to discuss with your health care provider. Fewer than 5 is okay!</p> <p>To learn more click on the i icon to get education & tips from pediatric health care experts about each topic.</p> <p>Making sure your child is ready to enter school</p> <ul style="list-style-type: none"><input type="checkbox"/> Helping your child spend time with other children i<input type="checkbox"/> Getting your child ready to start school i <p>Working on healthy habits</p> <ul style="list-style-type: none"><input type="checkbox"/> Getting started with healthy eating habits i<input type="checkbox"/> Getting started with good cleanliness habits i<input type="checkbox"/> Getting started with calm bedtime routines i<input type="checkbox"/> Coping with family & child stress i <p>Television and computer time</p> <ul style="list-style-type: none"><input type="checkbox"/> Setting healthy limits on screen time i<input type="checkbox"/> Helping your kids be active and play safely i <p>Being involved and safe in your community</p> <ul style="list-style-type: none"><input type="checkbox"/> Being a part of your community i

Well Visit Planner Visit Guide

The Well Visit Planner produces a Summary Visit Guide that includes information about the parent's priorities for the visit and issues about the child and family identified in the questions.

The parent can download, print, save and/or email the Summary Visit Guide to their provider or others as they wish.

EMAIL PDF SAVE VISIT GUIDE PRINT VISIT GUIDE TELL US WHAT YOU THINK

www.wellvisitplanner.org



WVP VISIT GUIDE: WHAT TO DISCUSS AT TEST-MS - 18 MONTH WELL-VISIT

Parents: Bring this Full Summary Visit Guide to your child's well-visit to help you remember what topics to bring up with your child's health care provider.

Note to Provider: For more information on the Well-Visit Planner, please see the end of this Visit Guide or visit [About Us](#).

1

Your Priorities to Discuss During Test-MS's Visit

Based on the priorities you selected, you may want to talk to your child's doctor about:

Developmental screening questionnaire: It is customary for a doctor or other health care provider to have you fill out a questionnaire about your child's development at this visit.

Sibling rivalry

Questions that you could ask:

- My older child isn't very patient with the toddler. They start to play together but it ends up with lots of fighting. Should I try to keep them apart?
- My older child wants time with me too, but I have to keep an eye on my toddler every minute. How can I help my older child understand the situation better?
- We have a younger child and my 18-month-old is not gentle with him and resents the time I spend with him. What are some tips for helping my 18-month learn how to play with my infant?

How your child might start to cling to you again or more

Help Me Grow South Carolina

- Number of unique children served 4836
- Counties served 12
- Number of referrals given 7589
- Number of developmental screenings completed 3638
- Percentage of concerns connected to services or with pending services 84.7%

Questions



Thank You!

Tiffany Howard

Program Coordinator, Lowcountry Outreach

**Help Me Grow South Carolina/Bradshaw Institute for
Community Child Health & Advocacy**

thoward@helpmegrowsc.org

(843) 300-5967